



FÄRNEBOFJÄRDEN NATIONAL PARK A UNIQUE RIVER LANDSCAPE

THE NATIONAL PARK IN BRIEF

- AREA: 10,471 hectares, of which 4,265 hectares is water
- INAUGURATION YEAR: 1998
- CLOSEST DISTRICTS: Österfärnebo, Gysinge, Tärnsjö
- MANAGED BY: Gävleborg County Administrative Board.



FLOOD AREA WITH MANY SPECIES

Here at the Lower Dalälven River, the river regularly bursts its banks and spreads across large areas. This flooding has created unique living environments for many different plants and animals. The wide Färnebo Bay is bordered by river meadows, floodplain forests, rapids and ancient woodlands. This is where the plant and animal species of northern and southern Sweden meet.

As a result, the area features an incredibly rich variety of flora and fauna, with many rare species. For example, there are more than 200 bird species here, of which around 100 breed locally. This is one of Sweden's most important conservation areas, which is why it has been designated a national park.

NATIONAL PARK - VALUABLE NATURE

The purpose of a national park is to preserve valuable nature for Sweden and the world. It should represent a type of landscape which is either unique or representative of the country. The national park status is the strongest protection valuable nature can attain. Currently there are 30 national parks in Sweden. The national parks cover approximately 1.6% of our country's area in total. In Sweden the land in the national parks is always owned by the State.

RAPIDS

The spring flood is powerful. The water makes headway above rocky beds. No plants grow in the rapids and there is no ice during the winter. The open water makes the air humid and a little warmer. The winter climate becomes milder. Animals and plants which are sensitive to dry and cold weather thrive here.

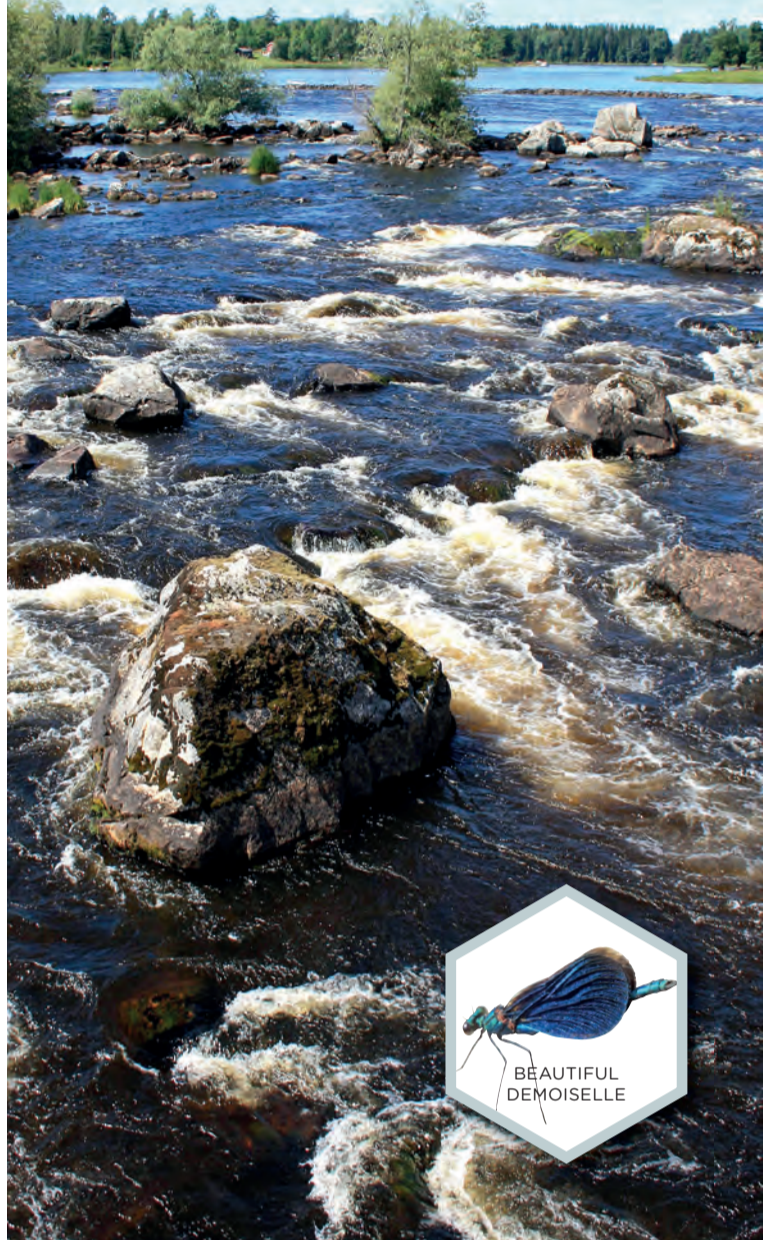


PHOTO PETER STAHL



BEAUTIFUL DEMOISELLE



- WHOOPER SWAN
- OSPREY
- GOOSANDER
- WHITE-TAILED EAGLE
- WHITE-THROATED DIPPER

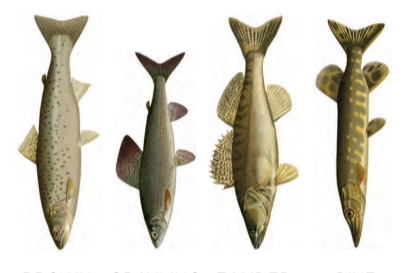
AQUATIC HABITATS ARE AN IMPORTANT FOOD SOURCE

There are a large variety of insects in the cold water, which provide an important food source for native birds and fish.

The birdlife displays a variety that is unique for Sweden and over one hundred species nest at Färnebofjärden on a regular basis.

White-tailed Eagle and Osprey often hover above the bay and during the winter the White-throated Dipper turns up in search of food in the open ice-free rapids.

Grayling and Brown trout can be found in the rivers' streaming water, which is rich in oxygen, while Pike and Zander prefer the calm wide bay. The fish management areas at Gysinge Rapids and Färnebo Bay have excellent fishing waters. On sunny days the shimmering Beautiful Demoiselle swarms close to the river's waterside.



BROWN TROUT GRAYLING ZANDER PIKE



GREAT FISHING WATERS
Information on purchasing a fishing permit: please call naturum (NP visitor centre) tel: +46 (0)10 225 15 16.

RIVER BAY

The river bay's calm water extends across the flat landscape. When water levels are high vast areas are flooded, making the boundary between the land and water diffuse. Hundreds of isles, holms and skerries are important breeding places for seabirds, which enjoy ample amounts of food from the productive waters.



PHOTO RIGGER JOHANSSON



PHOTO TOMAS ABLEND

WELCOME TO THE NATURUM

Färnebofjärden naturum (national park visitor centre) is located in the old stable in Gysinge, close to the Lower Dalälven River. The exhibition covers the flora and fauna and the environments you will encounter in the National Park. Here you can look, listen, smell and feel.

Detailed information about the national park and special places to visit and hike within it can be found here at the naturum. The building is wheelchair accessible with an elevator and accessible toilet.

For opening hours, please visit our website: www.sverigenationalparker.se/farnebofjarden

FREE ENTRANCE

Next to the naturum there is a bridge leading out to the mill ruins in the middle of the surging Gysinge rapids. Here you will find a nice fireplace for barbecuing which is wheelchair and stroller accessible.

CONTACT US

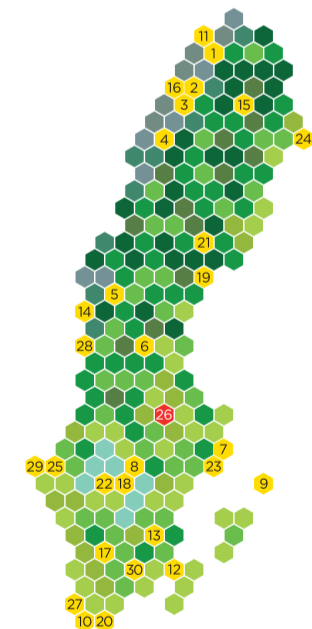
Administration office • naturum
Färnebofjärden National Park

Address Benedicks väg 3 • 811 97 Gysinge
Telephone +46 (0)10 225 15 16
Email farnebofjarden@lansstyrelsen.se
www.sverigenationalparker.se/farnebofjarden

FOLLOW US

Facebook Färnebofjärden nationalpark
Instagram farnebofjardens_nationalpark

SINCE 1909 NATIONAL PARKS OF SWEDEN



1. ABISKO An easily accessible mountain valley with unusually rich flora.
2. STORA SJÖFALLET / STUOR MUORRKE Impressive peaks, glaciers and ancient pine woodlands.
3. SAREK Magnificent, demanding wilderness in a unique mountainous landscape.
4. PIELJEKÄISE Expansive, pristine woodlands of mountain birch.
5. SONFJÄLLET A low mountain with natural woodland and plenty of bears.
6. HAMIRA A rare complex of natural woodland, wetland and watercourses.
7. ÅNGSÖ Genuine agricultural landscape with grazing animals and haymaking.
8. GÄRPHYTAN This old agricultural landscape is a sanctuary for many songbirds.
9. GOTSKA SANDÖN Unique, beautiful island with miles of sandy beaches.
10. DALBY SÖDERSKOG Leafy woodland on the plains of Skåne.
11. VADVEJÄKKA Sweden's northernmost national park is a mountain with deep caves.
12. BLÅ JUNGFRUN An island of legends, with smooth rocks, deciduous trees and beautiful views.
13. NORRÅ KVILL One of the few old growth type woodlands in southern Sweden.
14. TÖFSINGDALEN Valley with ancient pine woodlands, rich in boulders and rushing waters.
15. MUDDUS / MUTTOS The land of vast wetlands and old growth woodlands.
16. PADJELANTA / BADJELÄNNDA Rolling mountain heaths and big lakes, far from the nearest road.
17. STORÉ MOSSE The largest wetland area in Sweden south of Lapland.
18. TIVEDEN A wooded landscape with a sense of wilderness.
19. SKULESKOGEN Coast with magnificent views and the world's highest isostatic lift.
20. STENSHUVUD Coastal hills, broadleaved woodlands, inviting heathlands and beaches.
21. BJÖRNLANDET Mountains, cliffs and woodlands with traces of old woodland fires.
22. DJURÖ Archipelago in western Europe's biggest inland sea.
23. TYRESTA Pristine woodland just south of Stockholm.
24. HÄPÄRÄNDA SKÄRGÅRD Archipelago with sandy beaches and shallow waters.
25. TRESTICKLAN Roadless wilderness with expansive views from pine-covered ridges.
26. FÄRNEBOFJÄRDEN A mosaic of broadleaved woodlands and water in Nedre Dalälven.
27. SÖDERÅSEN Deciduous woodland, scree slopes, running water and a rich flora and fauna.
28. FULUFJÄLLET By Sweden's highest waterfall, old growth woodland meets mountainside that is white with lichen.
29. KOSTERHAVET Species-rich area of sea and archipelago with Sweden's only coral reef.
30. ÅSNEN Archipelago with hundreds of islands and old beech- and pineforests.

COVER PHOTO ANDRÉS OHLUND PHOTO KARL NYRHEIM, ERIK NORRMARK, JAN-OLUF HERNANSSON, GÖRAN SÖDERBERG, ANDRÉS HALLMÖVIST ILLUSTRATIONER PER-ANDRÉS NILSSON, JONAS LUNDIN, EUMERAS PRODUKTION, 2019

RIVER MEADOWS

Along the river there are areas without forests. They are referred to as river meadows. The meadows are flooded every spring, and sometimes during heavy rainfall. The floods make it difficult for trees to grow here. The water which floods across the meadows feeds the ground and grass. Plants which need light, damp and heat thrive here. Butterflies, dragonflies and voles also live here. This makes the river meadows good hunting-grounds for owls and birds of prey.



POPLAR ADMIRAL
The Poplar Admiral is one of our largest butterflies. It enjoys being up in the tree tops, but comes down to the ground to absorb moisture.

HOLLY BLUE
Holly Blue is the spring's first common blue. It is quite common and thrives in forests with both conifers and broadleaved trees. It can often be seen along paths and gravel roads, and in small glades.

- BOG VIOLET
- WATER SEDGE
- WILLOWLEAF YELLOWHEAD
- PURPLE LOOSESTRIFE



WATER SEDGE

HAYMAKING MEADOWS

The lush grass on the meadows was historically used as fodder for the animals. The naturally fertilized land resulted in a good harvest. The farmers collected the hay in barns. During winter it was transported home with horses and sledges across the ice. Now there are only a few meadow barns left. Haymaking still takes place on some meadows for nature and cultural preservation.

The Lower Dalälven River region's stretch runs together with the biological northern border - Limes Norrlandicus. Here coniferous forests meet deciduous forests with streaks of precious broad-leaved trees such as Oak, Lime and Hazel. Northern and southern Swedish plants and animals co-exist here, which makes the area unusually rich in species.



WHITE-BACKED WOODPECKER



LONGHORN BEETLE

FLOOD PLAIN FOREST

The forest between the open wetlands and the dry forest land is referred to as flood plain forest. The flood plain forest environments of Färnebofjärden with old rough aspens are unique in the country and are an important habitat for several rare and threatened species, which benefit from the annual floods. Here a large number of breeding owls and woodpeckers thrive.

PADDLE • CAMP • MAKE FIRES

A trip with a canoe in the National Park is an experience for those who want to get really close. There are cabins, camping grounds and a range of wind shelters for overnight stays in the area, see map.



PHOTO HERBERT ARELAND

RULES

A warm welcome to our beautiful national park! Remember that there are rules which you must be aware of and follow while you are here.

- You are allowed to fish if you have a fishing permit.
- Certain areas are closed to visitors between 1 January and 31 July. Respect any signs.
- Motor traffic, riding and cycling are only permitted on roads.
- Camping is only permitted in designated places.
- You must not pick, gather or dig up plants. However, you may pick berries and edible mushrooms for your own use.
- Open fires are forbidden except at designated campfire areas, which you can find at all cabins and wind shelters. However camping stoves and contained barbecues can be used throughout the park.
- You must not break branches, cut down trees or otherwise harm living or dead trees or bushes.
- Allowed boat speed limit is 7 knots, except in areas where a 12 or 20 knot limit applies.
- You must not use water skis or similar equipment with motor boats.
- Dogs must be on a leash at all times within the national park.

Find out more at www.sverigenationalparker.se/farnebofjarden

CONIFEROUS FOREST

The dark coniferous forests stretch out in the southern part of the National park. Old trees enchant and overshadow with their tight network of branches. Spreading dying and dead tree trunks give a feeling of virgin forest. Here the lynx tiptoes on quiet paws and the Ural owl sweeps silently between the trees.



PENNY BUN MUSHROOM

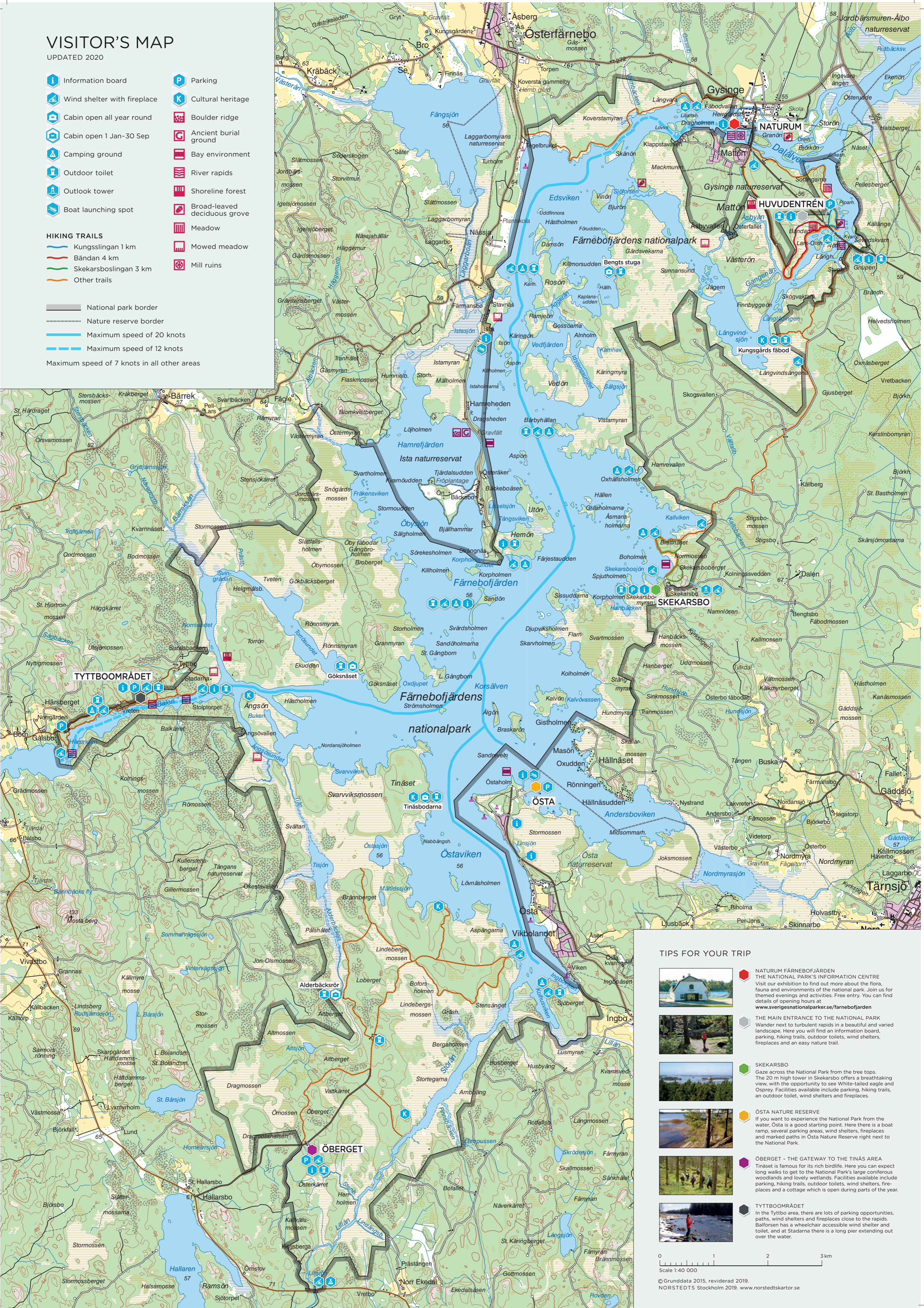


BLUEBERRIES

VISITOR'S MAP

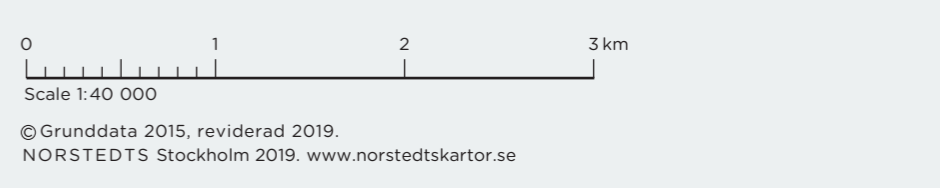
UPDATED 2020

- | | | | |
|--|-----------------------------|--|------------------------------|
| | Information board | | Parking |
| | Wind shelter with fireplace | | Cultural heritage |
| | Cabin open all year round | | Boulder ridge |
| | Cabin open 1 Jan-30 Sep | | Ancient burial ground |
| | Camping ground | | Bay environment |
| | Outdoor toilet | | River rapids |
| | Outlook tower | | Shoreline forest |
| | Boat launching spot | | Broad-leaved deciduous grove |
-
- | | | | |
|----------------------|---------------------|--|--------------|
| HIKING TRAILS | | | Meadow |
| | Kungsslingan 1 km | | Mowed meadow |
| | Bändan 4 km | | Mill ruins |
| | Skekarsbosling 3 km | | |
| | Other trails | | |
-
- | | |
|--|---------------------------------------------|
| | National park border |
| | Nature reserve border |
| | Maximum speed of 20 knots |
| | Maximum speed of 12 knots |
| | Maximum speed of 7 knots in all other areas |



TIPS FOR YOUR TRIP

- NATURUM FÄRNEBOFJÄRDEN**
 THE NATIONAL PARK'S INFORMATION CENTRE
 Visit our exhibition to find out more about the flora, fauna and environments of the national park. Join us for themed evenings and activities. Free entry. You can find details of opening hours at www.sverigenationalparker.se/farnebofjarden
- THE MAIN ENTRANCE TO THE NATIONAL PARK**
 Wander next to turbulent rapids in a beautiful and varied landscape. Here you will find an information board, parking, hiking trails, outdoor toilets, wind shelters, fireplaces and an easy nature trail.
- SKEKARSBO**
 Gaze across the National Park from the tree tops. The 20 m high tower in Skekarsbo offers a breathtaking view, with the opportunity to see White-tailed eagle and Osprey. Facilities available include parking, hiking trails, an outdoor toilet, wind shelters and fireplaces.
- ÖSTA NATURE RESERVE**
 If you want to experience the National Park from the water, Östa is a good starting point. Here there is a boat ramp, several parking areas, wind shelters, fireplaces and marked paths in Östa Nature Reserve right next to the National Park.
- ÖBERGET - THE GATEWAY TO THE TINÄS AREA**
 Tinäset is famous for its rich birdlife. Here you can expect long walks to get to the National Park's large coniferous woodlands and lovely wetlands. Facilities available include parking, hiking trails, outdoor toilets, wind shelters, fireplaces and a cottage which is open during parts of the year.
- TYTTBOOMRÅDET**
 In the Tyttbo area, there are lots of parking opportunities, paths, wind shelters and fireplaces close to the rapids. Balfors has a wheelchair accessible wind shelter and toilet, and at Stadarna there is a long pier extending out over the water.



© Grunddata 2015, reviderad 2019. NORSTEDTS Stockholm 2019. www.norstedtskartor.se